

Karridale Catch-Up



*growing through learning
active bodies, healthy minds*

KARRIDALE PRIMARY SCHOOL NEWSLETTER

ISSUE 7, 21 JUNE 2018

Buy Students Home Sewn Bags

In support of WA's ban on the supply of lightweight, plastic bags from 1 July 2018—our environmentally conscious students in Room 4 have been busy making mesh bags for fruit and vegetables.

The attractive mesh bags are available for purchase from Admin with all funds raised going to the Room 4 school camp. The bags come in three handy sizes (S, M, L) and price at \$2, \$4 \$6.

This is a great initiative by the Room 4 students and thanks go to Tamara Manser for making this happen!

Tell Us What You Want!

As mentioned in the last newsletter, surveys have been published. On Thursday copies were distributed to the eldest child in the family in Years 1 -6. We are expecting that your child/children will approach you to complete the survey. They will be



L-R: Emmasyn, Eleanor, Evelyn and Calahni promoting the mesh bags made by Room 4 students to raise funds for their camp.

highly motivated to encourage you to complete the form so they can return it to school to be rewarded with a canteen voucher to the value of \$4. Families with children in only K-Pre-primary will be personally approached by Fiona or Sharon soon. They will catch you at drop-off or pick-up times.

Student Achievement Reports

Reports will be emailed home on Monday 25 June. Please check your email to ensure you've received it.

Dates to Note

Please be sure to note in your diary or calendar that the last day of Term 2 is Thursday 28 June. Term 3 resumes for students on Tuesday 17 July.

"We must act now to protect our oceans from the deadly threat of plastic."

Sir David Attenborough

Did you know...

- more than 670 million lightweight plastic bags were used in WA in 2017—approximately 7 million of these were littered?
- lightweight plastic bags are easily blown by the wind, littering streets, parks and waterways and when they enter the ocean they endanger wildlife?
- we dump 8 million tonnes of plastic into the sea per year?
- plastic bags break up into small fragments (microplastics) and can be ingested by marine and land animals, thus entering the human food chain?

Payments Due!

Please finalise your payments as soon as possible.

Cost: \$4.55 Author Visit (P-6)
\$6.50 Musica Viva (P-6)
\$40.00 Interm Swimming (P-6)
\$5.00 WCE Footy Clinic, (3-6)
\$45.00 Voluntary Contributions (K-6)

You can pay via cheque, cash or direct deposit.

Direct deposit (bank-to-bank transfer) is our preferred option. Please include your child's name and a brief description.

BSB: 016 520 Account: 4992 64442

****Please try to bring the correct change if paying cash.**

Diary Dates - 2018

THU 28 JUNE	• Last Day of Term 2
FRI 29 JUNE	• School Development Day (no students)
MON 16 JULY	• School Development Day (no students)
TUE 17 JULY	• First Day of Term 3 for students
FRI 20 JULY	• 2019 Kindy Applications Due
WED 1 AUG	• Incursion: Mathy Matt Show, K-6, \$5 • P&C Meeting, 3.15pm, Under the Trees

Vision Statement: At Karridale Primary School, in partnership with the whole school community, we aim to provide an inclusive education for all students, in a safe, caring and interesting environment so that students can become adaptable and participating members of the community.

Celebrating “Growing Through Learning”

Reporting To Parents

Having read every child's report, I am really impressed with the progress and growth of all the students across the school. I am also impressed with the students attitude, behaviour and effort that they are showing at school each day.

This growth is a result of the determination of all the Teachers and Support Staff to ensure success for all children. I acknowledge the contribution made by parents for their support of what happens in class. Whether your child benefits from extra help or extension, parents and teachers working together is vital. I think this approach has worked really well for so many children this year and you will see this progress in their results. Well done everyone!

Reports will be emailed home on Monday 25 June. Please check your email to ensure you've received it/ them. Contact Admin if you have not received your child/children's reports. Parents without an email

address will receive a paper copy on Monday, so please look for the envelope in your child/children's bag.

Parent Meetings

Class teachers will be in touch about parent meetings as part of our reporting to parents process Semester One.

Room 1: Maria McGill will contact some parents in Term 3 as indicated in the reports. Otherwise, you may request a meeting by contacting Ms McGill to make a suitable time.

Room 2: Bev Caudle is inviting parents to contact her to arrange meetings at a suitable time on Tuesday 26 and Wednesday 27 June to meet.

Room 3: Vicki Fiorentino has sent a note home earlier this week inviting parents to contact her for a suitable time to meet during the first two weeks of Term 3.

Room 4: Rohan Bevan will contact the parents he would like to meet with, or you may request a meeting. Please contact Mr Bevan.



L-R: Hemi, River, Stevie, Xavier and Willow performing “I tre porcellini” at assembly.



L-R: Sam (wolf) and Xavier (little pig) with the house of straw in “I tre porcellini”.



L-R: Room 2 children, Jesse, Annysa, Arielle, Rosette, Angus, Edit and River at the end of the “Blossum Possum” performance.



L-R: Kindy 2019 Application to Enrol close on Friday 20 July 2018, so please act!

Don't Miss This Important Date!

Friday 20 July is an important date in your child's education.

You need to apply to enrol your children in a public school for 2019 if they are:

- starting Kindergarten – 4 years old by 30 June 2019
- starting Pre-primary (first year of compulsory school) – 5 years old by 30 June 2019

- starting Year 7 (first year of secondary school)
- changing schools.

Our staff are very experienced and deliver educational programs that respond to students interest and needs at an individual level.

Come and see us to enrol your children today. Please be sure to apply by **Friday 20 July 2018**.

Tips to Keep Kids Safe Online

- Encourage children to use technology in positive ways (eg learning, supporting others).
- Encourage children to set strong passwords and not share them.
- Place devices in communal areas. You can keep an eye on your child's activity.
- Don't allow your child to use mobile devices in bedrooms, especially after bedtime.
- Learn about social media and encourage your children to show you how to use them.
- Know where your children are going online and who they're talking to.
- Google your child's name every 2 months and encourage them to do the same.
- Make a written agreement with your child about online behaviours that are acceptable and unacceptable.

Source: Telethon Kids Institute.

*“Unless someone like you cares a whole awful lot,
nothing's going to better—it's not!”*

- Dr Seuss

KARRIDALE SCHOOL P&C

Dishwasher For Canteen!

At the meeting held on Wednesday 20 June it was announced that a dishwasher has been purchased and is ready for installation. Gozzi's Plumbing Service have kindly donated their time for the installation and we thank them for their generosity.

P&C Bank Details—Pay Online!

Name: Karridale Primary School P&C
BSB 633 000 **Acct No.** 154 038 079
Include your child's name & a description!

Next Meeting

3.15pm, Wednesday 1 August.

Everyone is welcome and encouraged to attend the P&C meetings. The meetings are short and informative and a great opportunity for you to share your ideas. Please join us!

New Faces In The Class Rooms This Term

"The support from staff and the community has been really appreciated—thank you everyone!"

Anna Pickles, Preservice Teacher

We've really enjoyed having some new faces at school this term with Anna Pickles in Room 1/2 and Jacquelin Sims in Room 3.

Anna and Jacquelin have been involved with all class activities whilst

working with their mentor teachers.

Anna has been with us for the duration of Term 2 working with Bev Caudle and Maria McGill as a preservice teacher from Murdoch University.

Jacquelin, a Karridale resident, has spent three weeks as a Curtin University preservice teacher, working towards her Bachelor of Early Childhood.

We acknowledge the contributions of the preservice teachers and their mentor teachers.

Wild Weather For Planting Out At Flinders Bay

"Thanks so much for braving the conditions, you are a hardy mob."

Tracey Muir, Environmental Ed. Officer

Our Year 3-6 students headed down to Augusta by bus on Monday to visit our Adopt-A-Spot location at Flinders Bay in rather inclement weather to continue their rehabilitation work.

Environmental Education Officer, Tracey Muir, with Margaret River Nature Conservation praised the efforts of our students who undertook planting in wild and woolly conditions.

"Your students did an outstanding job. Such fantastic planters." said Tracey Muir.

The students braved wintry weather conditions and did a fantastic job at restoring the coastal foreshore of Flinders Bay.

The activity was part of the State Natural Resource Management Program WA. Through squalls and

many downfalls of rain, children from Karridale and Augusta Primary Schools carefully planted in 400 pigface plants and 440 coastal plants over two days.

Thanks go to Gudrun and Jenny from Augusta Land and Coastal Care Group for all their help over the two days plus organisation and follow up.

A wonderful effort by so many to restore habitat for our unique flora and fauna.

McCleod and Rushy Creek Tour

On Wednesday the Year 5 and 6 students joined Tracey Muir again on a science excursion to McCleod and Rushy Creeks to perform water testing and macro invertebrate testing at both sites.

Students, Neve and Isaac reported it was also very interesting to see the habitats of honey possums and pygmy possums in the Leeuwin Naturaliste National Park they also visited on the excursion.



Above: Happy canteen customers!



L-R: Vicki Fiorentino planning lessons with Jacquelin Sims.



L-R: Anna Pickles working with Edith in art.



L-R: Xavier and Sam planting out at Augusta.

"When a flower doesn't bloom, you fix the environment in which it grows, not the flower."

- Alexander Den Heijer

Karridale Primary School
12612 BUSSELL HIGHWAY
KARRIDALE WA 6288
Ph: 9758 5517 or 9758 5586
Fax & Emergency Phone: 9758 6728
PRINCIPAL: FIONA CORMACK
E: Fiona.Cormack@education.wa.edu.au
MGR CORPORATE SERVICES: ROBYN DENNIS
E: Robyn.Dennis@education.wa.edu.au

Karridale Catch-Up
NEXT ISSUE: Thurs 26 July 2018
DEADLINE: Thurs 19 July 2018
Please email your information for inclusion
to: Louise.vanVliet@education.wa.edu.au

Our School Virtues

Caring

What is Caring?

Caring is giving love and attention to people and things that matter to you. You can show you care about people by saying and doing things that help them. Caring about something you are doing means giving it your best, and treating it with respect.

You can be caring by:

- Treating others and yourself with care.
- Letting people know that what they say is important by looking at them and listening closely.
- Handling things carefully.
- Treating your body with respect.
- Working with enthusiasm and excellence.

How have you shown you care today?

Thumbs Up 100 Night Readers

On Friday 15 June these students achieved 100 Nights of Reading! Great work. Remember to keep reading throughout the holidays.



Community Notices & Events

Naturaliste Community Health Immunisation Service

Tues 10 July 9.30am-12pm, Tues 24 July 2pm-4pm at Margaret River Resource Centre

Free service. Open clinic, no appointment required. Bring your Medicare Card and your child's purple book.

P: 9753 6478

Royal Life Saving Lessons—Margaret River Aquatic Academy Margaret River

Royal Life Saving stages 1 – 15 (from 3.5yrs)

(Swim & Survive Program and Rescue Awards)

Mon, Tues, Weds, Thur, Sat

Saturdays Specialised Parent and Child Classes (2 – 3.5yrs)

Private lessons available. To see continual improvement, swimming lessons need to be consistent

Roberta Williams: 0429 651 450

E: info@aquaticacademymargaretriver.com.au

TUNING IN TO KIDS Parenting Workshop

A FREE 6 SESSION PARENTING PROGRAM FOR PARENTS AND CARERS OF YOUNG CHILDREN

WOULD YOU LIKE TO LEARN HOW TO:

- Communicate with your child more effectively?
- Understand your child's needs?
- Help your child learn how to manage those difficult emotions?
- Prevent behavioural problems in your child?
- Help your child to problem solve and develop resilience?

TUNING IN TO KIDS SHOWS YOU HOW TO HELP YOUR CHILD DEVELOP EMOTIONAL INTELLIGENCE.

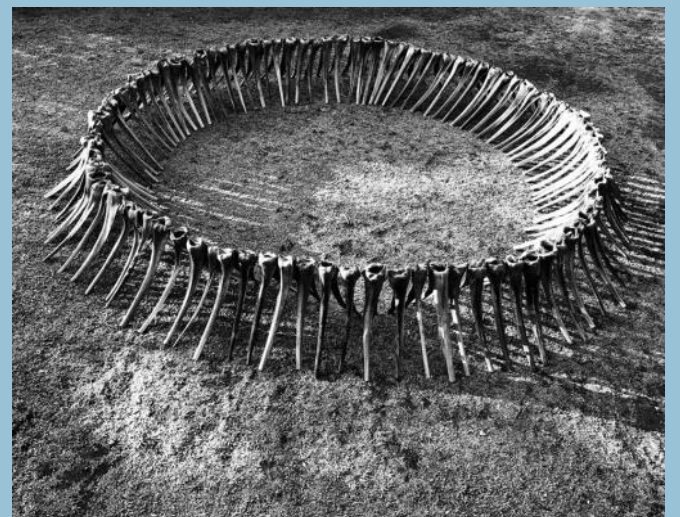
Children with higher emotional intelligence:

- Have greater success with making and keeping friends
- Have better concentration at school
- Are more able to calm down when upset or angry
- Tend to have fewer childhood illnesses

EMOTIONAL INTELLIGENCE MAY BE A BETTER PREDICTOR OF ACADEMIC AND CAREER SUCCESS THAN IQ!

Where: Augusta Primary School, 32 Allnutt Terrace, Augusta WA
When: Every Thursday for 6 weeks starting at 12.30 sharp till 3 pm 2nd, 9th, 16th, 23rd, 30th August and 6th September
Cost: FREE
Crèche: Not Provided (Please make other arrangements for your children during this time.)
Facilitator: Kerry Hawkins and Cilla Jude (Relationships Australia)
TO BOOK: Please call Augusta Primary School 9781 5100 or Kerry on 6164 0528 to register.

Supported by



Loving Land Art

Land Art is an International Art movement that started in the late 1960's when artists moved outside of the gallery and studio to work in nature and moved away from using traditional materials and sculptural techniques like bronze casting and carving, steel and glass to using found natural materials.

Our students will work with Land Artist *Elaine Clocherty* and build on their love of stick 'cubbies' to make their own and collective Land Artworks in the school's bushland area.

www.elaineclocherty.com



Department of Water and Environmental Regulation
Department of Primary Industries and Regional Development



Lower Blackwood Catchment
Land Conservation District Committee

Soil testing program to support better fertiliser decisions

Expressions of interest now open!



Join over 800 farmers working to increase farm productivity and improve the health of our waterways and estuaries!

Hardy Inlet Catchment

Can I apply?

This program is available to beef, dairy and sheep grazing enterprises with at least 40 cleared, arable hectares. You must be located in the Hardy Inlet Catchment (Lower Blackwood).

What's in it for me?

- Soil testing of your whole farm
- Pasture tissue testing of targeted paddocks
- Results and advice at a local workshop
- Personalised, one-on-one agronomic advice

How much does it cost?

Farmers are required to co-contribute \$300 to receive \$5000 in value.

Expressions of interest close 6 July 2018

Go to rei.dwer.wa.gov.au/
Or email nutrientmapping@dpird.wa.gov.au



rei.dwer.wa.gov.au
estuary@dwer.wa.gov.au

#WAestuaries

For more information contact:
Jo Wren - Lower Blackwood LCDC
T: (08) 97584 021
Mob: 0408 584 006
joanna.wren@lowerblackwood.com.au